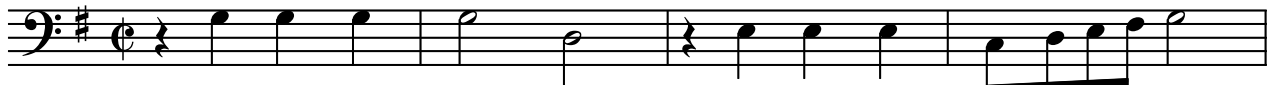


# Chi la gagliarda

Baldassarre Donato  
1530 - 1603

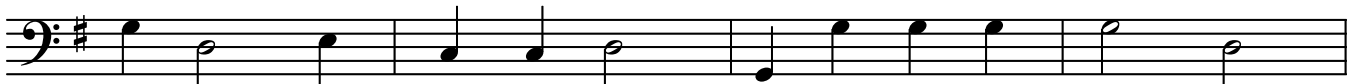
Mosso

Basso



Chi la ga - gliar - da, chi la ga - gliar - - -  
Pro - va - te\_un po - co, pro - va - te\_un po - - -

5



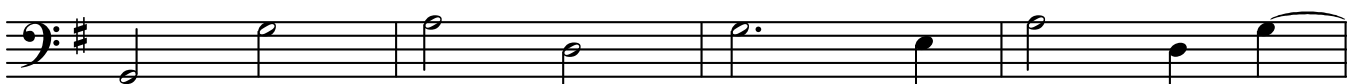
da, don - ne vo'im - pa - ra - re, chi la ga - gliar - da,  
co, pro - va - te\_a dan - za - re, pro - va - te\_un po - co,

9



chi la ga - gliar - - - da, don - ne vo'im - pa - ra -  
pro - va - te\_un po - - - co, pro - va - te\_a dan - za -

13



re, ve - ni - te\_a noi che sia - mo mae -  
re, a die - ci pas - si tut - ti noi

17



stri fi - ni, mae - stri fi - ni, mae - stri fi -  
sal - tia - mo, noi sal - tia - mo, noi sal - tia -

21



ni. Che di se - ra\_e di mat - ti - na mai man -  
mo.

25



chia - mo, mai man - chia - mo di so - na - re:

29



Lan lan lan lan lan lan lan lan lan lan lan lan

33

lan lan lan lan lan lan lan

This musical staff contains measures 33, 34, and 35. It is written in bass clef with a key signature of one sharp (F#). The melody consists of quarter notes: G2 (measure 33), A2 (measure 34), B2 (measure 35), C3 (measure 36), D3 (measure 37), E3 (measure 38), and F3 (measure 39). The lyrics 'lan' are placed below each note.

36

lan lan lan lan lan lan lan lan

This musical staff contains measures 36, 37, and 38. It is written in bass clef with a key signature of one sharp (F#). The melody consists of quarter notes: G2 (measure 36), A2 (measure 37), B2 (measure 38), C3 (measure 39), D3 (measure 40), E3 (measure 41), F3 (measure 42), and G3 (measure 43). The lyrics 'lan' are placed below each note.

39

lan lan lan lan lan lan lan lan.

This musical staff contains measures 39, 40, and 41. It is written in bass clef with a key signature of one sharp (F#). The melody consists of quarter notes: G2 (measure 39), A2 (measure 40), B2 (measure 41), C3 (measure 42), D3 (measure 43), E3 (measure 44), F3 (measure 45), and G3 (measure 46). The lyrics 'lan' are placed below each note, with a period at the end of the final note.